

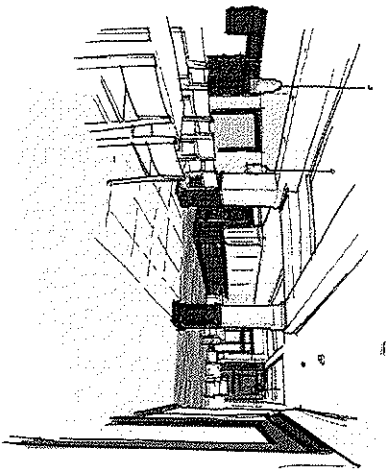
EXTERIOR SITE PERSPECTIVE

holist
rsmith
architects

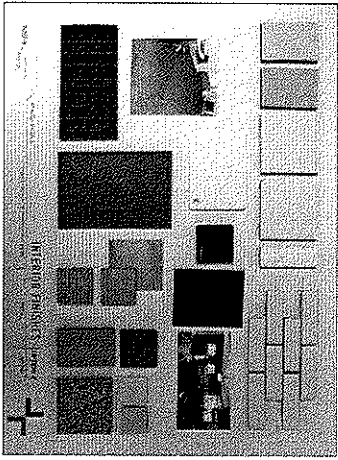
HOUSE REFINEMENTS

Pi Kappa Alpha: The Chapter requested that we accommodate an additional 14 beds in expansion capability, so changes were made to the house at the residential wings, where the wings were turned to the west on either end to allow easier expansion in the future.

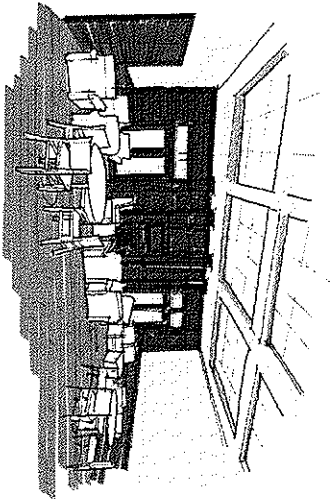
This change happily decreased the long, linear face along Sprigg Street, creating a much more inviting home for the Chapter.



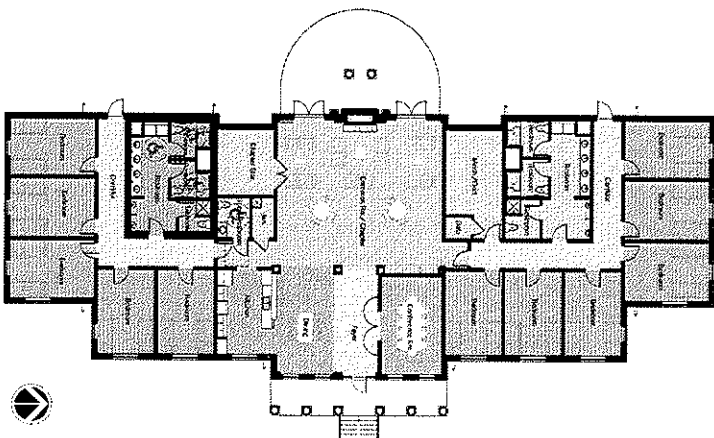
INTERIOR SKETCH - FOYER TO COMMON ROOM



INTERIOR FINISH BOARD - OPTION 2 - APPROVED 05/19/2015

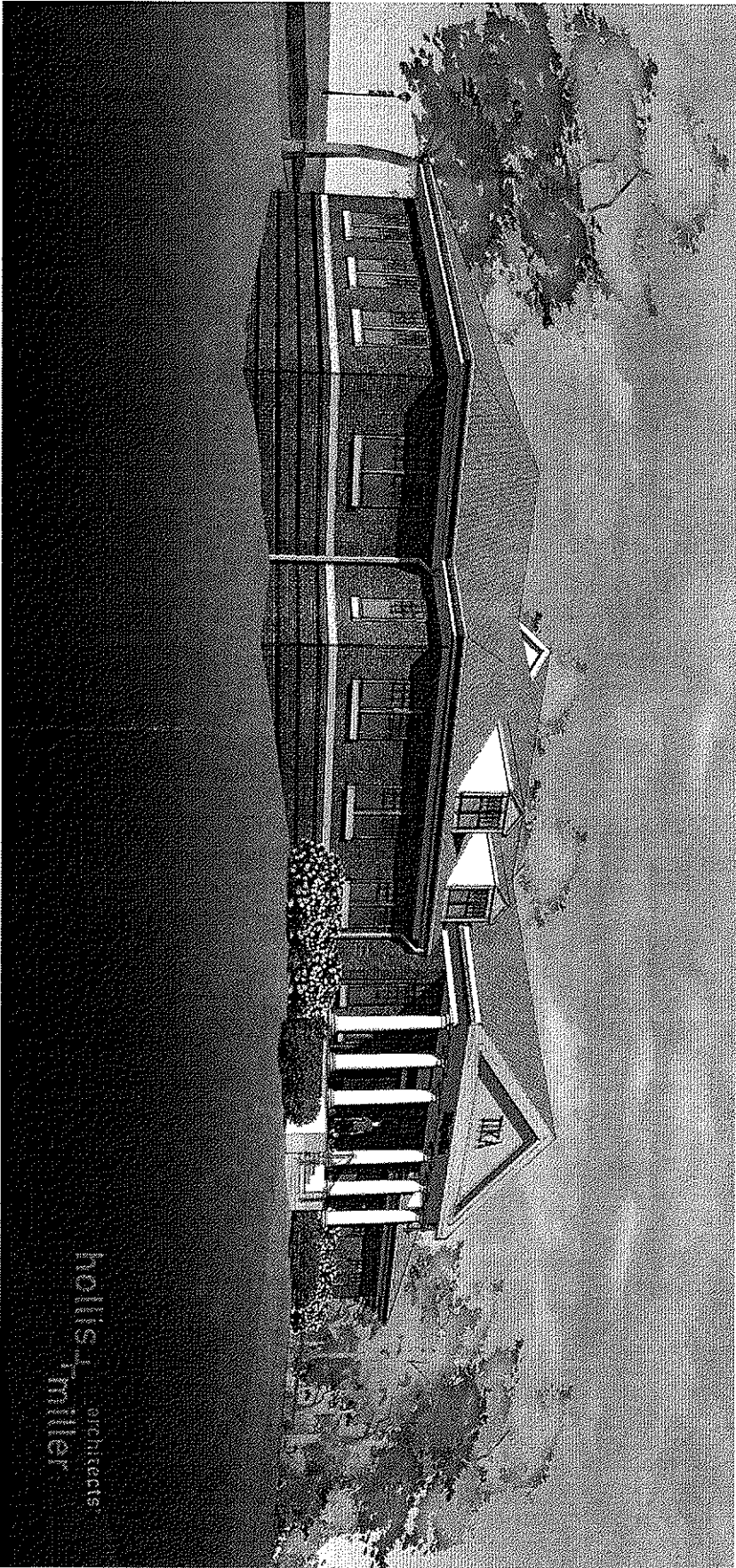


INTERIOR SKETCH - COMMON ROOM



SPRIGG STREET

FLOOR PLAN



EXTERIOR PERSPECTIVE

hollis_j_miller architects